



MINISTRY OF HIGHER EDUCATION

NotebookLM

Starter Kit



 awantec Google Cloud



Introduction

As you approach your final year projects and thesis defense, the volume of reading and synthesis required can be overwhelming. To support your research, the university has upgraded your account with access to **NotebookLM Enterprise**.

What is NotebookLM?

It is a "grounded" AI research assistant. Unlike ChatGPT, which pulls from the open internet, NotebookLM **only knows what you upload**. You feed it your 300 references, and it becomes an expert on *your* specific research topic—complete with page-level citations.

Why use the Enterprise version?

- **Your Thesis is Private:**
Your data is **never** used to train Google's public models. Your unpublished research remains your intellectual property.
- **Audio Overviews:**
Turn your entire reading list into a 15-minute "podcast" discussion to listen to while commuting.

For Literature Reviews (NotebookLM Enterprise)

- **The Goal:** You need to synthesize 20 journal articles for a grant proposal.
- **The Drill:** Go to [NotebookLM.Siswa.AI](#) > Upload your PDFs, text, audio, Microsoft Word, PowerPoint, Excel Youtube URL. Up to 300 sources per notebook.
- **The Prompt:** *"Synthesize the methodologies used across all these papers and identify the three most common limitations mentioned."*
- **The Result:** A cited overview of 20 papers in minutes.



Seamless Research Starts Here Your NotebookLM Enterprise account is fully operational. To begin, log in and upload your documents or link your digital sources (web/YouTube) to create a unified knowledge base.

Once your materials are gathered, you can immediately leverage AI-driven synthesis to support your thesis or projects. Take a moment to navigate the interface and embark on your next research milestone with confidence.

How to Activate

Your NotebookLM License is ready.

- Create your notebookLM today> <https://notebooklm.siswa.ai>



Use your University Email

(e.g., name@student.uni.edu.my)



Use your personal Gmail

(e.g., name@gmail.com)

- Once logged in, upload your documents and notes, paste website and YouTube links, as well as copied text, and start generating insights immediately.



NotebookLM Enterprise Sample

Step 1:

Add Source > Web Search

Step 2:

Search for: Malaysia Public Universities student handbook, policies and procedures

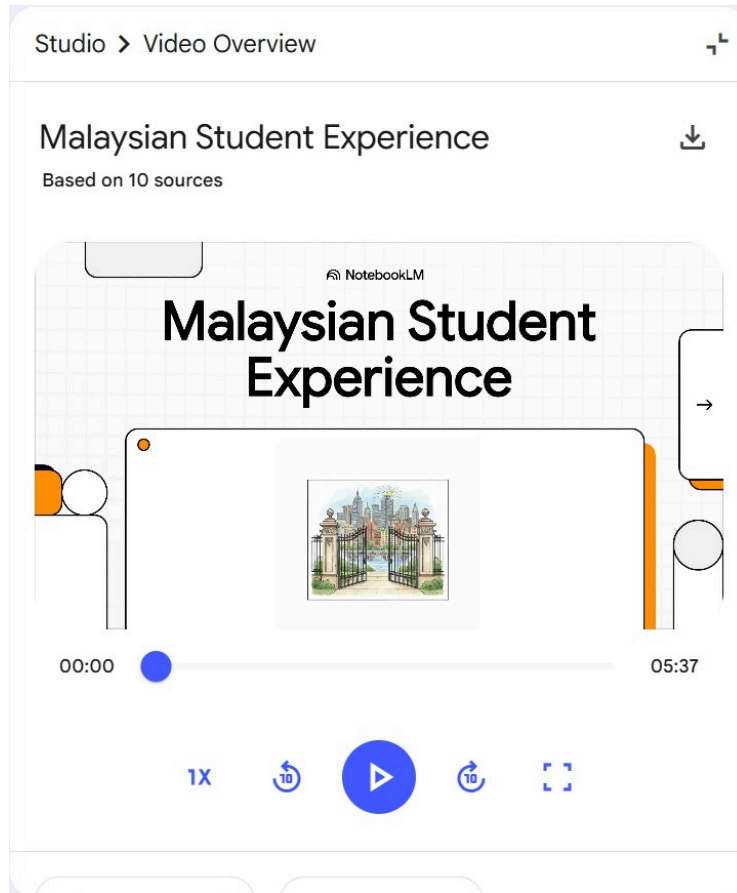
Here's everything we have put together:

The Summary after adding all the sources

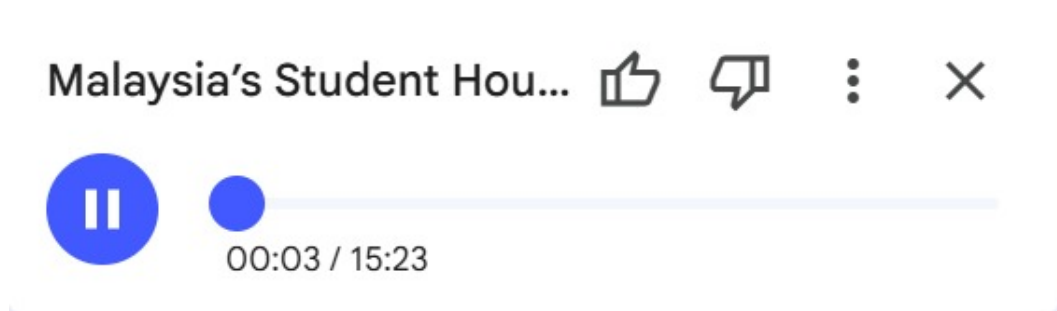
The screenshot shows a chat window titled "Chat" with a hamburger menu icon in the top right. The main content is a summary titled "Student Policies and Welfare" based on 10 sources. The text describes the student experience and higher education landscape in Malaysia, focusing on the regulatory environment (academic rules at Universiti Malaya and Universiti Tun Hussein Onn Malaysia, and the Universities and University Colleges Act 1971) and the provision and demand for student housing. A blue button with a downward arrow and the text "Jump to bottom" is overlaid on the text. At the bottom, there is a text input field with the placeholder "Start typing...", a "10 sources" label, a blue send button, and a search bar containing the text "How do external policies and resources influence Malaysian unive" with a search icon.



Video Overview

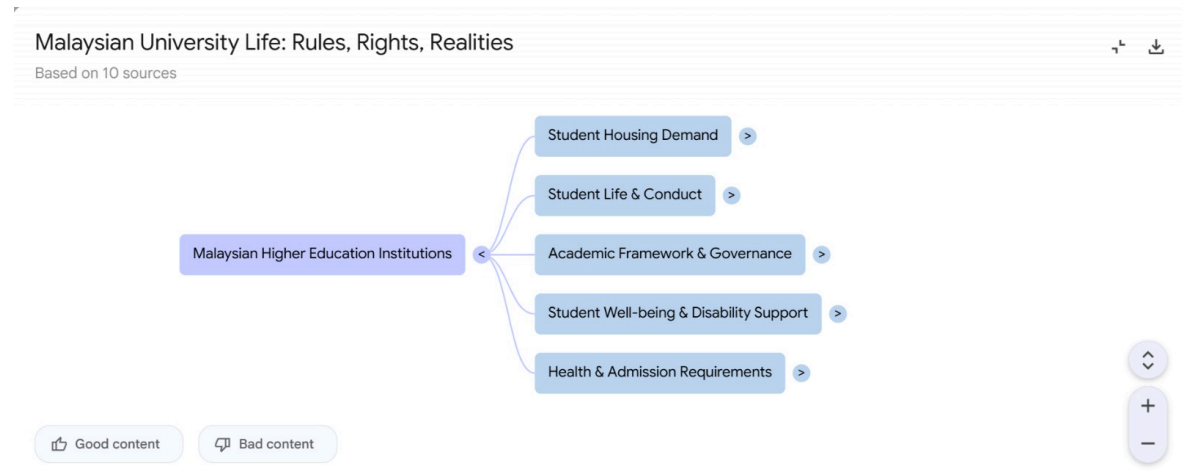


Audio Overview





Mind Map



Reports - Briefing doc

Briefing Document: Malaysian Higher

Education Landscape - Key Themes and Ideas

Date: November 26, 2024 **Prepared For:** Senior Leadership **Subject:** Review of Main Themes and Important Ideas in Malaysian Higher Education Policy and Student Experience

Executive Summary: This briefing synthesizes information from diverse sources regarding Malaysia's higher education sector, focusing on institutional frameworks, student experience, and policy drivers. Key themes include the growing demand for higher education, challenges in student housing, evolving student autonomy and political participation, the critical role of health and mental health services, and the need for improved disability inclusion. Malaysian universities operate under significant government oversight, balancing national development goals with student welfare and academic freedom. While progress is noted in

Convert to source



Reports - Study guide

Navigating Malaysian Higher Education: A Comprehensive Study Guide

Detailed Study Guide

This study guide reviews key aspects of higher education in Malaysia, drawing from insights on student housing demand, university guidelines, health examinations, disability inclusion policies, student autonomy, and student responsibilities.

I. Malaysian Higher Education Landscape * Growth and Enrollment: Higher education institutions (HEIs) in Malaysia, like globally, are experiencing continuous growth in student populations. This consistent increase in enrollment often outpaces the provision of on-campus housing facilities. *** Challenges:** HEIs face issues such as insufficient on-campus housing, economic recessionary effects impacting funding for new developments, and varied policies

 Convert to source

Reports - FAQ

What are the primary drivers of off-campus student housing demand in Malaysia?

The demand for off-campus student housing in Malaysia is primarily driven by several interconnected factors. Firstly, there is a **consistent and significant growth in student populations** due to increased demand for higher education, which continually outpaces the available on-campus housing facilities provided by Higher Education Institutions (HEIs). This inadequacy forces many students to seek alternatives in the private rental market. Secondly, **economic constraints** play a crucial role; economic recessions, high building costs, and government budget cuts on HEIs limit their ability to construct new student accommodations. Additionally, the **scarcity and high cost of land**, particularly in urban and densely populated areas around HEIs, make new on-campus development expensive or unfeasible. Thirdly, **student demographics and preferences** contribute to this demand. Postgraduate, married, and international

 Convert to source



Reports - Timeline

Here is a detailed timeline of main events and a cast of characters based on the provided sources:

Detailed Timeline

Pre-1960s

- **Ancient Greek Era:** The concept of academic freedom existed and was challenged.

1960s

- **1961:** The University of Malaya is founded, marking the establishment of higher education in Malaysia.
- **1962:** Hamka publishes "Lembaga Hidup," discussing students' roles in society.
- **1963:** Monypenny publishes on academic freedom for students.
- **1969:** The University of Science Malaysia and Tunku Abdul Rahman College are founded. Bissell publishes on academic freedom.

Convert to source

A sample Chat prompt with the result/response

Chat Refresh

How do national laws and university policies shape student autonomy and academic freedom?

National laws and university policies significantly shape student autonomy and academic freedom by establishing frameworks for governance, conduct, and support within higher education institutions ¹ ...

National Laws and Their Impact

In Malaysia, several key national laws and their amendments define the scope of student autonomy and academic freedom:

- **Universities and University Colleges Act 1971 (Act 30):**
 - Historically, Act 30 has been a primary instrument for regulating public university activities and, at times, limiting

Start typing... 10 sources

How is disability funding provided to Malaysian universities?



MINISTRY OF HIGHER EDUCATION



You're All Set

Your NotebookLM Enterprise license is ready.
For more information, visit <https://www.siswa.ai>

Start your research journey with clarity, confidence, and control—because great research deserves great tools.